

## GIRLS UNIFORM LIST

### TRANSITION

AUTUMN & SPRING TERM	SUMMER TERM (Summer uniform can be worn until October half term, weather permitting)
<ul style="list-style-type: none"> <li>· Tartan pinafore dress</li> <li>· Red polo shirt with school crest (<i>long or short-sleeved</i>)</li> <li>· Bottle green jumper (<i>V-neck, with school crest</i>)</li> <li>· Bottle green tights or green knee length socks</li> <li>· Red rainmac</li> <li>· Green/red fleece beanie hat, scarf &amp; gloves (<i>for playground use on cold days</i>)</li> <li>· Black shoes (<i>see approved list overleaf</i>)</li> </ul>	<ul style="list-style-type: none"> <li>· School summer dress</li> <li>· Bottle green jumper (<i>V-neck with school crest</i>)</li> <li>· White ankle socks</li> <li>· Bottle green legionnaires baseball cap with school crest</li> <li>· Red rainmac</li> <li>· Black shoes (<i>see approved list overleaf</i>)</li> </ul>

### ALL TERMS

- Bottle green document case
- Pair of white sports trainers
- Bottle green track suit
- **\*\*Bottle green pump bag, in which there should be:**
  - *spare pair of pants*
  - *spare pair of socks*
- Bottle green art overall
- Wellingtons

**\*\*Regulation school bags should be obtained from Early Years**

**Uniform Supplier:** Early Years—407—411 Stratford Road, Shirley, B90 4AA  
Tel: 0121 733 1456

**Email:** [earlyyears@hotmail.com](mailto:earlyyears@hotmail.com)

It is our policy that all children should wear school uniform when attending school or when participating in a school organized event outside normal school hours. We provide a complete list of the items needed for school uniform overleaf.

Our policy is based on the notion that a school uniform -

- promotes a sense of pride in the school,
- engenders a feeling of community and belonging,
- is practical and smart,
- identifies the children with the school,
- is not distracting in the form,
- makes the children feel equal to their peers in terms of appearance,
- is regarded as suitable,
- has been designed with health and safety in mind.

We require all children to wear the type of shoe pictured below:

**START-RITE  
TRILOGY**

6 – 12½



**START-RITE  
TRINITY**

7 – 12½



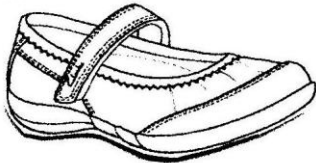
**START-RITE  
VIOLET**

9 – 13



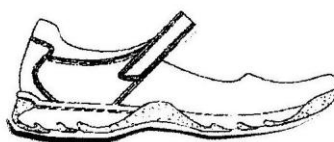
**CLARKS  
LEXIE SET**

10 – 12½



**HUSH PUPPIES  
MILEY**

9 – 13



Available from:           Instone Footwear Ltd  
417 Stratford Road  
Shirley  
  
Tel: 0121 744 6289

Located in the same block of shops as Early Years

## GIRLS UNIFORM LIST

### PRE-PREP - FOUNDATION & RECEPTION

AUTUMN & SPRING TERM	SUMMER TERM (Summer uniform can be worn until October half term, weather permitting)
<ul style="list-style-type: none"> <li>· Tartan pinafore dress</li> <li>· Red polo shirt with school crest (<i>long or short-sleeved</i>)</li> <li>· Bottle green jumper (<i>V-neck with school crest</i>)</li> <li>· Bottle green tights or green knee length socks</li> <li>· Red felt hat with school band</li> <li>· Red rainmac</li> <li>· Green/red fleece beanie hat, scarf &amp; gloves (<i>for playground use on cold days</i>)</li> <li>· Black shoes (<i>see approved list overleaf</i>)</li> </ul>	<ul style="list-style-type: none"> <li>· School summer dress</li> <li>· School blazer</li> <li>· Bottle green jumper (<i>V-neck with school crest</i>)</li> <li>· White ankle socks</li> <li>· Bottle green legionnaires baseball cap with school crest</li> <li>· Red rainmac</li> <li>· Black shoes (<i>see approved list overleaf</i>)</li> </ul>

### ALL TERMS

- Bottle green art overall
- **\*\*Bottle green document case**
- **\*\*Bottle green pump bag, in which there should be:**
  - *spare pair of pants*
  - *spare of school socks*
- Bottle green PE shorts
- White PE polo shirt with bottle green trim
- Bottle green tracksuit with school crest (*to have a loop for hanging on peg, named on the front*)
- Pair of white sports trainers
- Short white socks for PE
- Wellingtons

**\*\*Regulation school bags should be obtained from Early Years**

**Uniform Supplier:** Early Years–407–411 Stratford Road, Shirley, B90 4AA  
Tel: 0121 733 1456  
Email: **earlyyears@hotmail.com**



It is our policy that all children should wear school uniform when attending school or when participating in a school organized event outside normal school hours. We provide a complete list of the items needed for school uniform overleaf.

Our policy is based on the notion that a school uniform -

- promotes a sense of pride in the school,
- engenders a feeling of community and belonging,
- is practical and smart,
- identifies the children with the school,
- is not distracting in the form,
- makes the children feel equal to their peers in terms of appearance,
- is regarded as suitable,
- has been designed with health and safety in mind.

We require all children to wear the type of shoe pictured below:

**START-RITE  
TRILOGY**  
6 – 12½



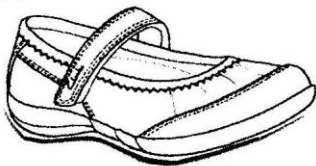
**START-RITE  
TRINITY**  
7 – 12½



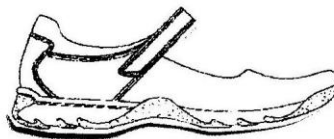
**START-RITE  
VIOLET**  
9 – 13



**CLARKS  
LEXIE SET**  
10 – 12½



**HUSH PUPPIES  
MILEY**  
9 – 13



Available from:                    Instone Footwear Ltd  
                                                 417 Stratford Road  
                                                 Shirley  
  
                                                 Tel: 0121 744 6289

Located in the same block of shops as Early Years



## GIRLS UNIFORM LIST

## PRE-PREP - YEAR 1

AUTUMN & SPRING TERM	SUMMER TERM (Summer uniform can be worn until October half term, weather permitting)
<ul style="list-style-type: none"> <li>· Tartan pinafore dress</li> <li>· Red polo shirt with school crest (<i>long or short-sleeved</i>)</li> <li>· Bottle green jumper (<i>V-neck with school crest</i>)</li> <li>· Bottle green tights or green knee length socks</li> <li>· Red felt hat with school band</li> <li>· Red rainmac</li> <li>· Green/red fleece beanie hat, scarf &amp; gloves (<i>for playground use on cold days</i>)</li> <li>· Black shoes (<i>see approved list overleaf</i>)</li> </ul>	<ul style="list-style-type: none"> <li>· School summer dress</li> <li>· Bottle green jumper (<i>V-neck with school crest</i>)</li> <li>· White ankle socks</li> <li>· Straw-hat with school band</li> <li>· School blazer</li> <li>· Red rainmac</li> <li>· Bottle green legionnaires baseball cap with school crest</li> <li>· Black shoes (<i>see approved list overleaf</i>)</li> </ul>

## ALL TERMS

- Bottle green art overall
- \*\*Bottle green document case
- \*\*Bottle green pump bag, in which there should be:
  - *spare pair of pants*
  - *spare of school socks*
- Bottle green PE shorts
- White PE polo shirt with bottle green trim
- Bottle green tracksuit with school crest  
(*to have a loop for hanging on peg, named on the front*)
- Pair of white sports trainers
- Wellingtons

\*\*Regulation school bags should be obtained from Early Years

**Uniform Supplier:** Early Years–407–411 Stratford Road, Shirley, B90 4AA  
Tel: 0121 733 1456

Email: [earlyyears@hotmail.com](mailto:earlyyears@hotmail.com)



It is our policy that all children should wear school uniform when attending school or when participating in a school organized event outside normal school hours. We provide a complete list of the items needed for school uniform overleaf.

Our policy is based on the notion that a school uniform -

- promotes a sense of pride in the school,
- engenders a feeling of community and belonging,
- is practical and smart,
- identifies the children with the school,
- is not distracting in the form,
- makes the children feel equal to their peers in terms of appearance,
- is regarded as suitable,
- has been designed with health and safety in mind.

We require all children to wear the type of shoe pictured below:

**START-RITE  
TRILOGY**  
6 – 12½



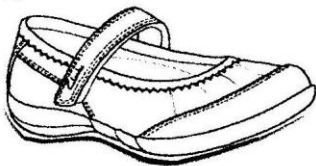
**START-RITE  
TRINITY**  
7 – 12½



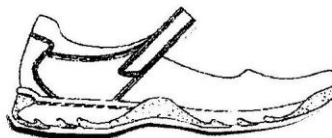
**START-RITE  
VIOLET**  
9 – 13



**CLARKS  
LEXIE SET**  
10 – 12½



**HUSH PUPPIES  
MILEY**  
9 – 13



Available from:                    Instone Footwear Ltd  
                                                 417 Stratford Road  
                                                 Shirley  
                                                 Tel: 0121 744 6289

Located in the same block of shops as Early Years

## GIRLS UNIFORM LIST

### PRE-PREP - YEAR 2

AUTUMN & SPRING TERM	SUMMER TERM (Summer uniform can be worn until October half term, weather permitting)
<ul style="list-style-type: none"> <li>· Tartan kilt</li> <li>· White shirt with long sleeves</li> <li>· Bottle green jumper (<i>V-neck with school crest</i>)</li> <li>· Bottle green tights or green knee length socks</li> <li>· Red felt hat with School band</li> <li>· Red rainmac</li> <li>· Green/red fleece beanie hat, scarf &amp; gloves <i>(for playground use on cold days)</i></li> <li>· Black shoes (<i>see approved list overleaf</i>)</li> </ul>	<ul style="list-style-type: none"> <li>· School summer dress</li> <li>· School blazer</li> <li>· Bottle green jumper (<i>V-neck with school crest</i>)</li> <li>· White ankle socks</li> <li>· Straw hat with school band</li> <li>· Bottle green legionnaires baseball cap with school crest</li> <li>· Red rainmac</li> <li>· Black shoes (<i>see approved list overleaf</i>)</li> </ul>

#### ALL TERMS

- Bottle green art overall
- \*\*Bottle green document case
- \*\*Bottle green pump Bag, in which there should be:
  - *spare pair of pants*
  - *spare of school socks*
- Bottle green PE shorts
- White PE polo shirt with bottle green trim
- Bottle green tracksuit with school crest  
*(to have a loop for hanging on peg, named on the front)*
- Pair of white sports trainers
- Short white socks for PE
- Wellingtons

\*\*Regulation school bags should be obtained from Early Years

**Uniform Supplier:** Early Years–407–411 Stratford Road, Shirley, B90 4AA  
Tel: 0121 733 1456

Email : [earlyyears@hotmail.com](mailto:earlyyears@hotmail.com)

It is our policy that all children should wear school uniform when attending school or when participating in a school organized event outside normal school hours. We provide a complete list of the items needed for school uniform overleaf.

Our policy is based on the notion that a school uniform -

- promotes a sense of pride in the school,
- engenders a feeling of community and belonging,
- is practical and smart,
- identifies the children with the school,
- is not distracting in the form,
- makes the children feel equal to their peers in terms of appearance,
- is regarded as suitable,
- has been designed with health and safety in mind.

We require all children to wear the type of shoe pictured below:

**START-RITE  
TRILOGY**  
6 – 12½



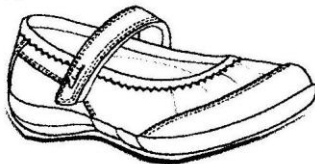
**START-RITE  
TRINITY**  
7 – 12½



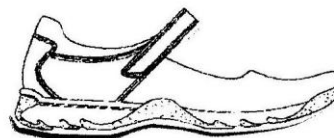
**START-RITE  
VIOLET**  
9 – 13



**CLARKS  
LEXIE SET**  
10 – 12½



**HUSH PUPPIES  
MILEY**  
9 – 13



Available from:           Instone Footwear Ltd  
417 Stratford Road  
Shirley  
  
Tel: 0121 744 6289

Located in the same block of shops as Early Years